

PROGNOSYS™ FOR 5500sc

Eliminate last minute maintenance emergencies.

PROGNOSYS is a predictive diagnostic system that allows you to be proactive in your maintenance, by alerting you to upcoming instrument issues. Know with confidence whether changes in your measurements are due to changes in your instrument or your water.



Measurement Indicator

The Measurement Indicator monitors the instrument's components and uses that information to alert the user to upcoming instrument needs before measurements become questionable.



Service Indicator

The Service Indicator tracks the number of days until the instrument will require maintenance or service.

Time to plan your maintenance *before* your measurements are affected!

MAINTENANCE REQUIRED



Measurement Indicator:

Calibration slope is outside of acceptable limits

Sample requires unusually high optics capacity

Excessive light detected during sample reading

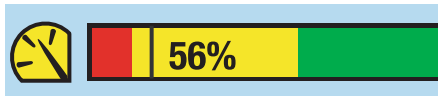
Poor sample quality detected



Service Indicator:

Maintenance required for filters, valves, tubing and other wear items

MAINTENANCE PENDING



Measurement Indicator:

Calibration is nearing unacceptable limits

Sample requires more optical capacity than expected

Sample reading environment has high light exposure

Questionable sample quality detected



Service Indicator:

Expected maintenance required within 90 days for filters, valves, tubing and other wear items

OPTIMAL PERFORMANCE



Measurement Indicator:

Calibrations are within acceptable limits

Required optical capacity is within a reasonable range

Minimal or no light exposure detected during sample reading

Detected sample can be read accurately



Service Indicator:

No pending serve or maintenance tasks required within the next 90 days in relation to filters, valves, tubing and other wear items

NOTE: Many of the parameters and tasks considered for the Measurement Indicator will also be displayed through the Service Indicator if the related instrument components require maintenance soon.

Principle of Operation

PROGNOSYS is an easy-to-install sc1000 module that allows you to be proactive in your maintenance. This system alerts you to upcoming maintenance tasks by monitoring the instrument's internal components and tracking service requirements. We've leveraged our expertise to give you absolute confidence in your on-line instrumentation and the quality of your measurement results.

The two PROGNOSYS indicators give you all the information you need to plan your preventative maintenance and avoid unexpected maintenance emergencies. The service indicator is designed to make your maintenance planning easy, with clear visibility of upcoming tasks. As a part of the service indicator, PROGNOSYS tracks the number of days until required action for each maintenance task. The measurement indicator goes beyond tracking expected maintenance work and interprets the instrument's internal signals to inform the user of instrument condition. The reading is expressed as a percentage value and is designed to help you know when your instrument requires maintenance before your measurements become questionable and might affect your process.

The PROGNOSYS sensor works with a variety of Hach sc sensors when used with the sc1000 controller. By giving you immediate awareness of instrument condition, PROGNOSYS allows you to take a truly proactive approach to your maintenance. Know with confidence whether changes in your results are due to changes in your instrument or your water.

Specifications*

System Requirements

sc1000 digital controller software version 3.20 or higher

Additional PROGNOSYS Instruments

PROGNOSYS is currently included in:

- RTC systems
- 5500sc analyzer (does not require an sc1000 controller)

PROGNOSYS can be used for:

- AISE sc
- AMTAX sc
- AN-ISE sc
- LDO2
- NISE sc
- NITRATAX sc
- PHOSPHAX sc
- SOLITAX sc
- SONATAX sc



*Subject to change without notice.

DASTEC S.R.L.

Distribuidores Autorizados

Buenos Aires, Argentina

Tel.: (54-11) 5352-2500

E-mail: info@dastecsrl.com.ar

Web: www.dastecsrl.com.ar

HACH COMPANY World Headquarters: Loveland, Colorado USA

United States: 800-227-4224 tel 970-669-2932 fax orders@hach.com

Outside United States: 970-669-3050 tel 970-461-3939 fax int@hach.com

hach.com

LIT2809-LIT2811 Prog

K14 Printed in U.S.A.

©Hach Company, 2014. All rights reserved.

In the interest of improving and updating its equipment,

Hach Company reserves the right to alter specifications to equipment at any time.



Be Right™